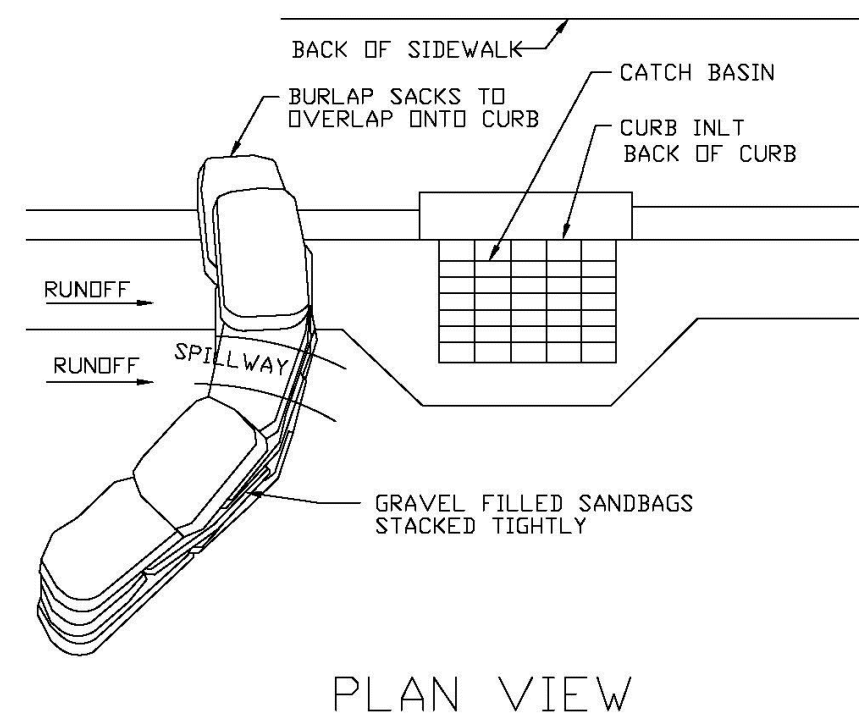


- NOTES:
1. PLACE CURB TYPE SEDIMENT BARRIERS ON GENTLY SLOPING STREET SEGMENTS, WHERE WATER CAN POND AND ALLOW SEDIMENT TO SEPARATE FROM RUNOFF.
 2. SANDBAGS, OF EITHER BURLAP OR WOVEN GEOTEXTILE FABRIC, ARE FILLED WITH GRAVEL, LAYERED AND PACKED TIGHTLY.
 3. LEAVE ONE SANDBAG GAP IN THE TOP ROW TO PROVIDE A SPILLWAY FOR OVERFLOW.
 4. INSPECT BARRIERS AND REMOVE SEDIMENT AFTER EACH STORM EVENT. SEDIMENT AND GRAVEL MUST BE REMOVED FROM THE TRAVELED WAY IMMEDIATELY.

CURB INLET SEDIMENT BARRIER

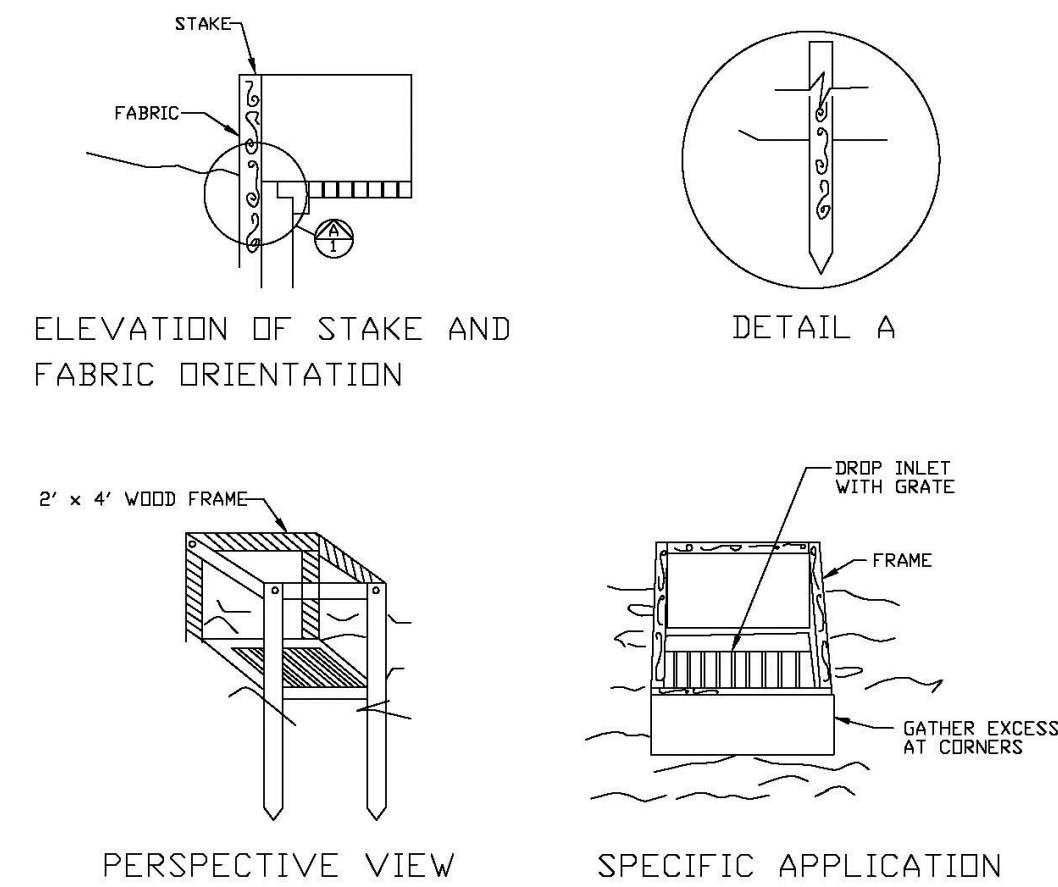
| | | | |
|----------------------------|------|---|----------------------------------|
| ENGINEERING STANDARDS 2025 | | | |
| REVISIONS | | ENGINEERING DIVISION CITY OF POMPANO BEACH | CURB INLET SEDIMENT BARRIER |
| BY | DATE | | |
| | | SCALE: N.T.S. | DATE: MAY 2022 DWG. NO. 507-1 |
| | | | |
| | | | |



- NOTES:
1. PLACE CURB TYPE SEDIMENT BARRIERS ON GENTLY SLOPING STREET SEGMENTS, WHERE
 2. WATER CAN POND AND ALLOW SEDIMENT TO SEPARATE FROM RUNOFF.
- SANDBAGS OF EITHER BURLAP OR WOVEN GEOTEXTILE FABRIC ARE FILLED WITH GRAVEL.
3. LAYERED AND PACKED TIGHTLY.
 4. LEAVE A ONE SANDBAG GAP IN THE TOP ROW TO PROVIDE A SPILLWAY FOR OVERFLOW.
- INSPECT BARRIERS AND REMOVE SEDIMENT AFTER EACH STORM EVENT. SEDIMENT AND GRAVEL MUST BE REMOVED FROM THE TRAVELED WAY IMMEDIATELY.

CURB AND GUTTER SEDIMENT BARRIER

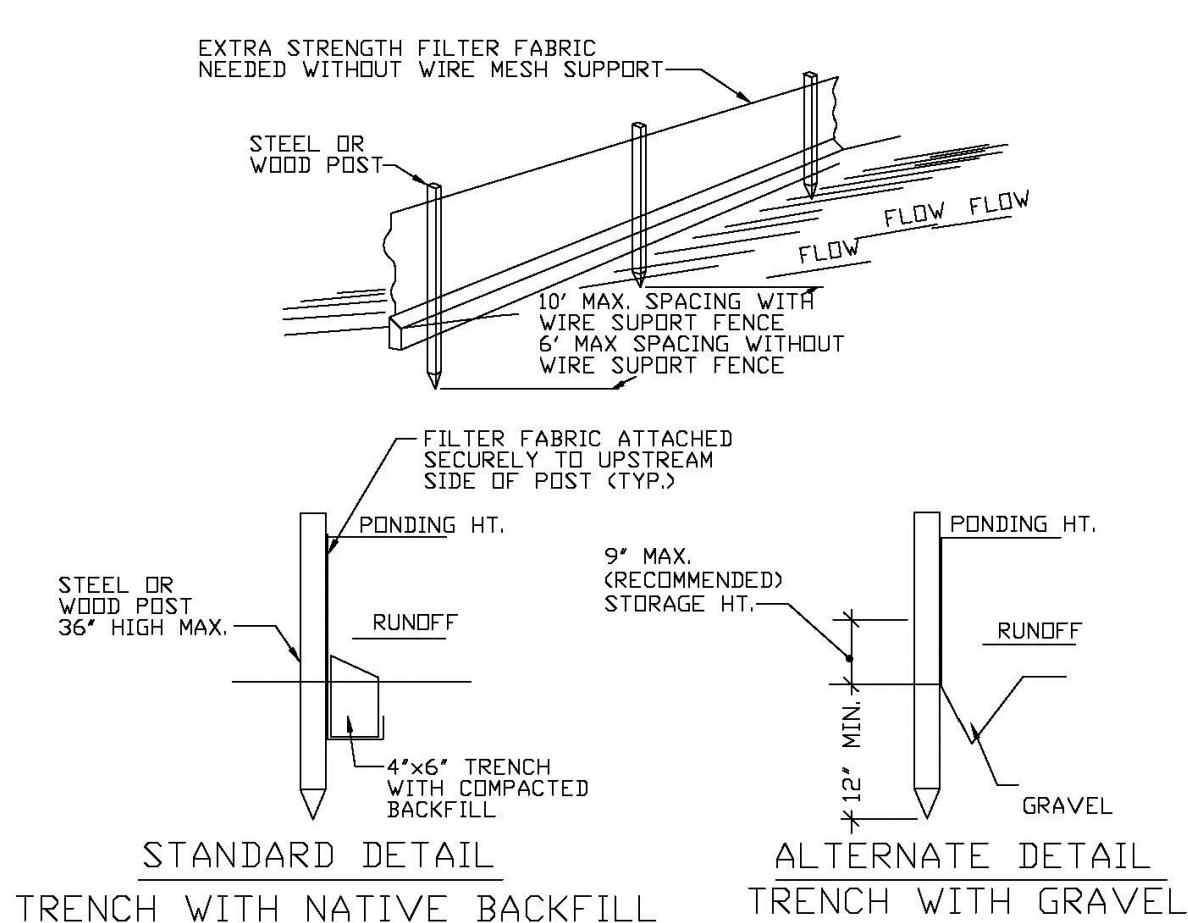
| | | | |
|----------------------------|------|---|-------------------------------------|
| ENGINEERING STANDARDS 2025 | | | |
| REVISIONS | | ENGINEERING DIVISION CITY OF POMPANO BEACH | CURB AND GUTTER SEDIMENT BARRIER |
| BY | DATE | | |
| | | SCALE: N.T.S. | DATE: MAY 2022 DWG. NO. |
| | | | 507-2 |
| | | | |



THIS METHOD OF INLET PROTECTION IS APPLICABLE WHERE THE INLET DRAINS A RELATIVELY FLAT AREA (SLOPE NO GREATER THAN 5%) WHERE THE INLET SHEET OR OVERLAND FLOWS (NOT EXCEEDING 1 C.F.S.) ARE TYPICAL. THE METHOD SHALL NOT APPLY TO INLETS RECEIVING CONCENTRATED FLOWS, SUCH AS IN STREET OR HIGHWAY MEDIANS

FILTER FABRIC
DROP INLET SEDIMENT FILTER

| | | |
|---|------|--|
| ENGINEERING STANDARDS 2025 | | |
| REVISIONS | | ENGINEERING DIVISION CITY OF POMPANO BEACH SCALE: N.T.S. |
| BY | DATE | |
| | | |
| | | |
| | | |
| FILTER FABRIC DROP INLET SEDIMENT FILTER | | DATE: MAY 2022 DWG. NO. 508-1 |

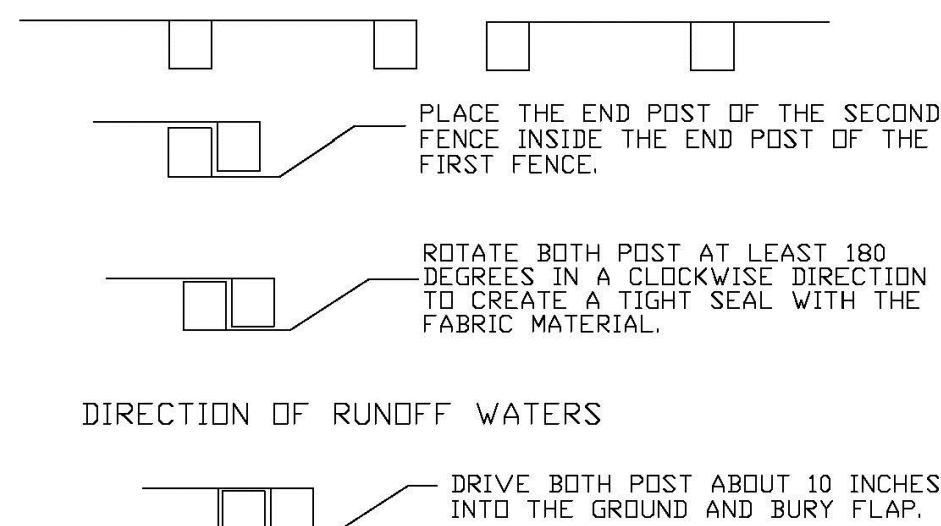


SILT FENCE

EROSION CONTROL GENERAL NOTES

1. SILT FENCE AND TURBIDITY BARRIERS MUST REMAIN IN PLACE AND BE MAINTAINED AT ALL LOCATIONS SHOWN IN THE DRAWINGS UNTIL CONSTRUCTION IS COMPLETED.
2. THE CONTRACTOR SHALL PREPARE, INSTALL, MAINTAIN AND REMOVE EROSION CONTROL MEASURES AS SHOWN IN THE DRAWINGS AND WHEN THE EROSION CONTROL MEASURES ARE NOT SHOWN IN THE DRAWINGS, THE CONTRACTOR SHALL SUBMIT SCHEDULE FOR THE INSTALLATION, INSPECTION AND MAINTENANCE OF THE EROSION CONTROL FEATURES AS SHOWN IN THE DRAWINGS OR AS DIRECTED BY THE DESIGN ENGINEER. THE SCHEDULE SHALL SPECIFICALLY SHOW THE SCHEDULE FOR THE INSTALLATION, INSPECTION AND MAINTENANCE OF THE EROSION CONTROL MEASURES, AND WHEN THE EROSION CONTROL FEATURE WILL BE INSTALLED, INSPECTED, AND MAINTAINED. IT SHALL ALSO INCLUDE METHODS TO PREVENT EROSION OF STREAM, LAKES, TIDAL WATERS, CANALS, AND IMPOUNDMENTS. EROSION CONTROL MEASURES SHALL BE MAINTAINED UNTIL CONSTRUCTION IS COMPLETED.

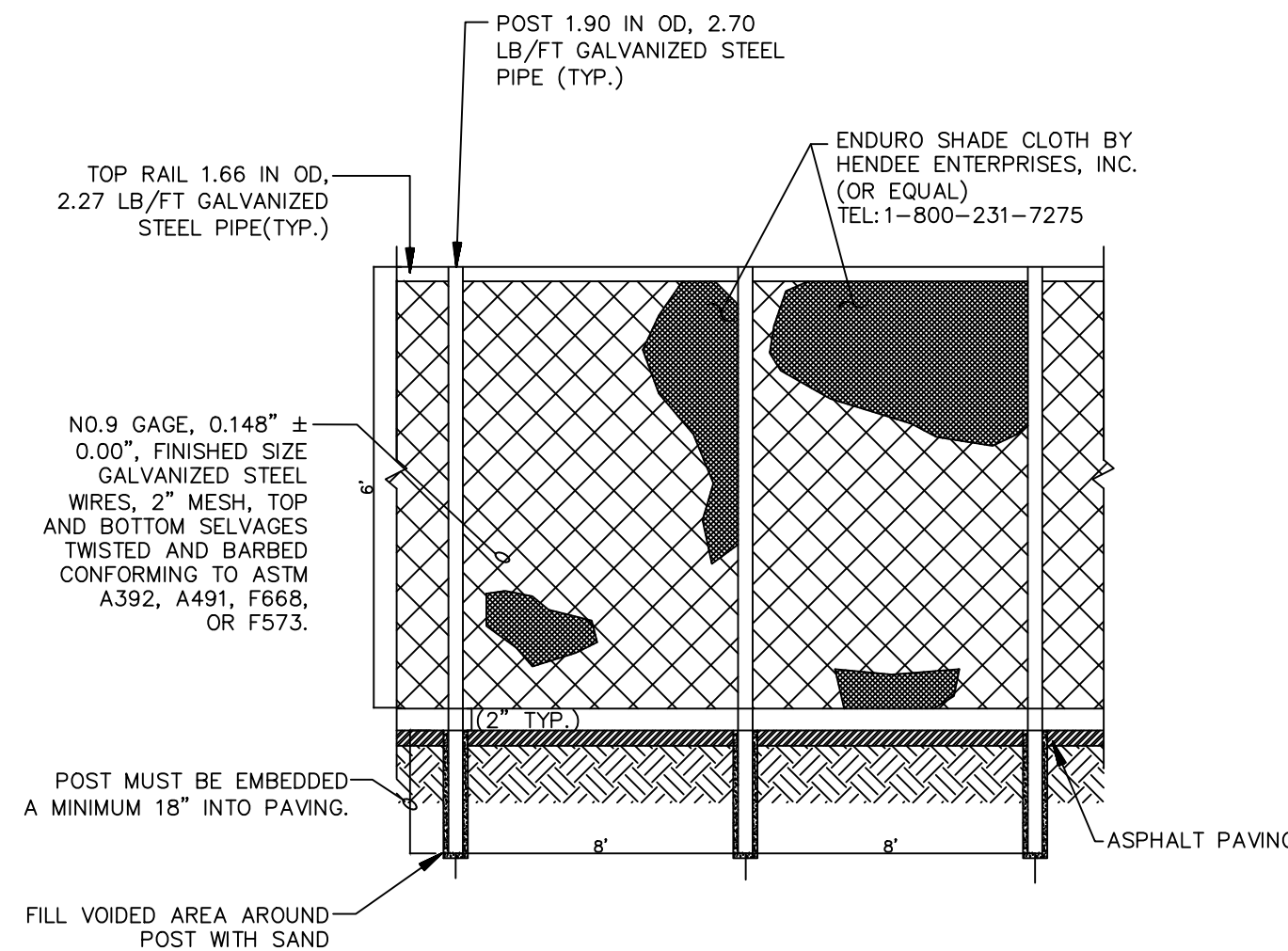
| | | | |
|----------------------------|------|---|----------------|
| ENGINEERING STANDARDS 2025 | | | |
| REVISIONS | | ENGINEERING DIVISION CITY OF POMPANO BEACH | SILT FENCE |
| BY | DATE | | |
| | | SCALE: N.T.S. | DATE: MAY 2022 |
| | | | DWG. NO. |
| | | | 509-1 |
| | | | |



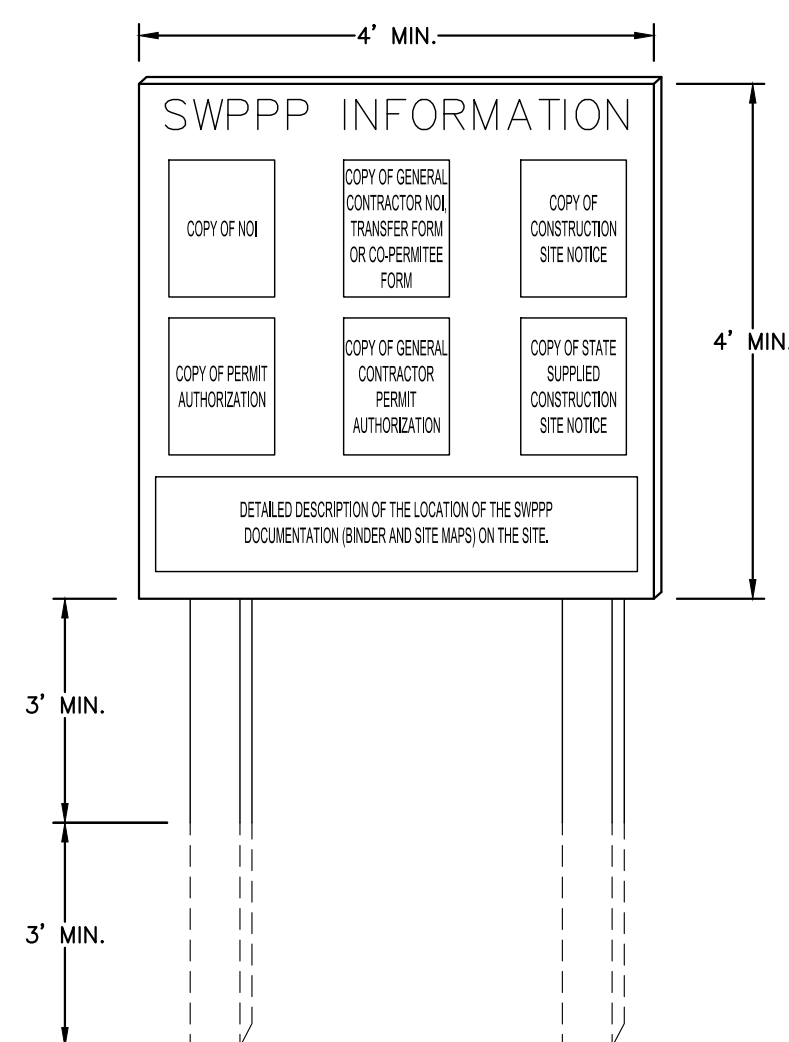
- NOTES:
1. INSPECT AND REPAIR FENCE AFTER EACH STORM EVENT AND REMOVE SEDIMENT WHEN NECESSARY.
 2. REMOVED SEDIMENT SHALL BE DEPOSITED TO AN AREA THAT WILL NOT CONTRIBUTE SEDIMENT OFF-SITE AND CAN BE PERMANENTLY STABILIZED.
 3. SILT FENCE SHALL BE PLACED ON SLOPE CONTOURS TO MAXIMIZE PONDING EFFICIENCY.

ATTACHING TWO SILT FENCES

| | | | |
|----------------------------|------|---|---------------------------|
| ENGINEERING STANDARDS 2025 | | | |
| REVISIONS | | ENGINEERING DIVISION CITY OF POMPAÑO BEACH | ATTACHING TWO SILT FENCES |
| BY | DATE | | |
| | | | |
| | | | |
| | | | |
| SCALE: N.T.S. | | DATE: MAY 2022 DWG. NO. | 509-2 |

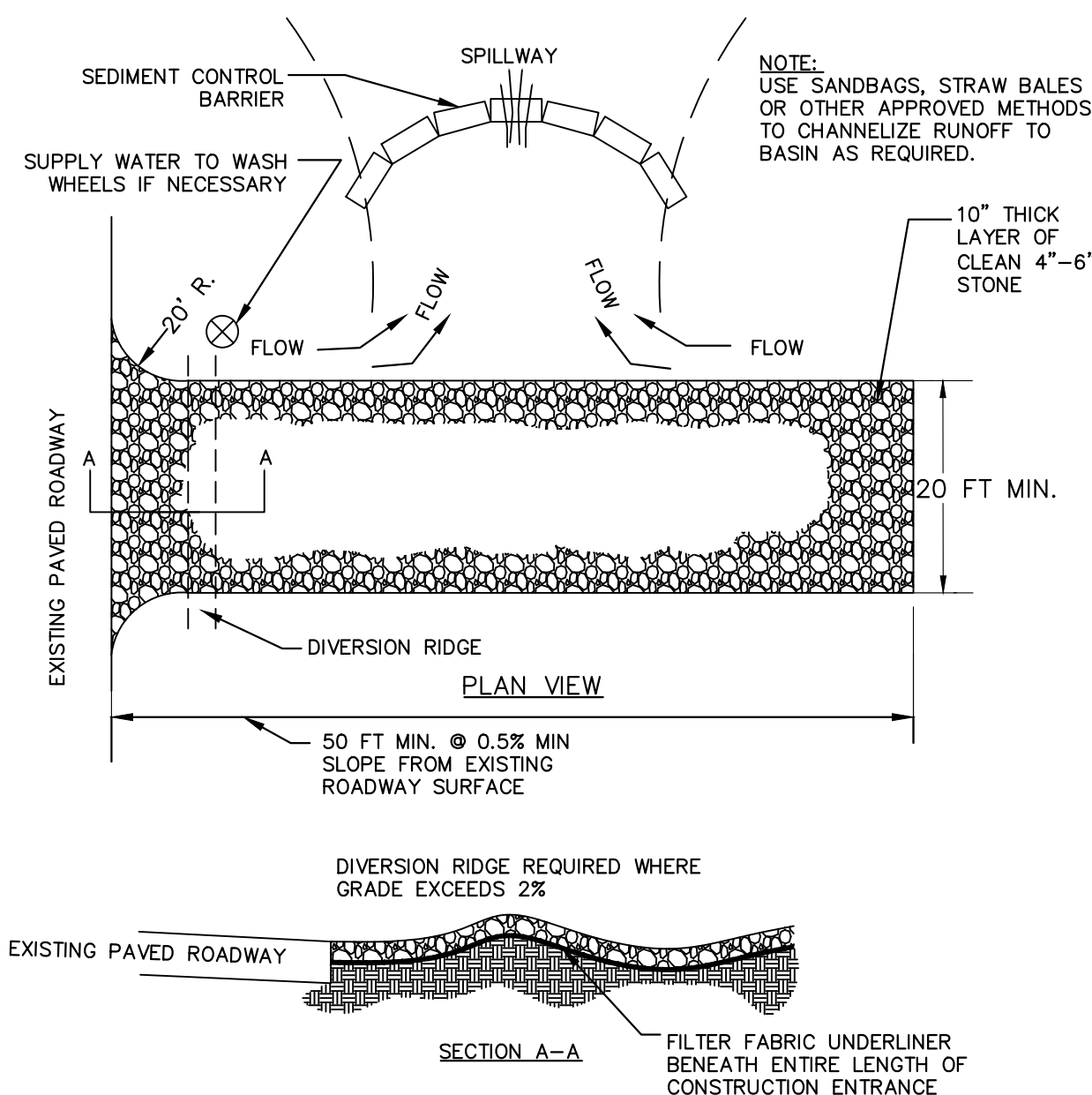


**1 6' CHAIN LINK CONSTRUCTION
FENCE WITH VISUAL DUST SCREEN
N.T.S.**



- NOTES:
1. "SWPPP INFORMATION" MUST BE DISPLAYED PROMINENTLY ACROSS THE TOP OF THE SIGN, AS SHOWN.
2. SIGN TO BE CONSTRUCTED OF A RIGID MATERIAL, SUCH AS PLYWOOD OR OUTDOOR SIGN BOARD. SIGN MUST BE CONSTRUCTED IN A MANNER TO PROTECT DOCUMENTS FROM DAMAGE DUE TO WEATHER (WIND, SUN, MOISTURE, ETC.).
3. SWPPP INFORMATION SIGN MUST BE LOCATED NEAR THE ENTRANCE/EXIT OF THE SITE, SUCH THAT IT IS ACCESSIBLE/VIEWABLE BY THE GENERAL PUBLIC, BUT NOT OBSTRUCTING VIEWS AS TO CAUSE A SAFETY HAZARD.
4. ALL POSTED DOCUMENTS MUST BE MAINTAINED IN A CLEARLY READABLE CONDITION AT ALL TIMES THROUGHOUT CONSTRUCTION AND UNTIL THE NOTICE-OF-TERMINATION (NOT) IS FILED WITH THE PERMIT.
5. CONTRACTOR SHALL POST OTHER STORM WATER AND/OR EROSION AND SEDIMENT CONTROL RELATED PERMITS ON THE SIGN AS REQUIRED BY THE LOCAL AGENCY.
6. SIGN SHALL BE LOCATED OUTSIDE OF PUBLIC RIGHT-OF-WAY AND EASEMENTS UNLESS APPROVED BY THE GOVERNING AGENCY.
7. CONTRACTOR IS RESPONSIBLE FOR ENSURING STABILITY OF THIS SWPPP INFORMATION SIGN.

2 SWPP INFORMATION SIGN
N.T.S.



- NOTES:
1. THE ENTRANCE SHALL BE MAINTAINED IN A CONDITION THAT WILL PREVENT TRACKING OR FLOWING OF SEDIMENT ONTO PUBLIC RIGHTS-OF-WAY. THIS MAY REQUIRE TOP DRESSING, REPAIR AND/OR CLEANOUT OF ANY MEASURES USED TO TRAP SEDIMENT.
 2. WHEN NECESSARY, WHEELS SHALL BE CLEANED PRIOR TO ENTRANCE ONTO PUBLIC RIGHT-OF-WAY.
 3. WHEN WASHING IS REQUIRED, IT SHALL BE DONE ON AN AREA STABILIZED WITH CRUSHED STONE THAT DRAINS INTO AN APPROVED SEDIMENT TRAP OR SEDIMENT BASIN.

3 STABILIZED CONSTRUCTION ENTRANCE
N.T.S.

THIS ITEM HAS BEEN DIGITALLY SIGNED
AND SEALED BY GEORGE BALABAN, P.E.
ON THE DATE ADJACENT TO THE SEAL.

SIGNATURE MUST BE VERIFIED ON ANY
ELECTRONIC COPIES.

THE PRESENCE OF GROUNDWATER SHOULD BE ANTICIPATED. CONTRACTOR'S BID SHALL INCLUDE CONSIDERATION FOR ADDRESSING THIS ISSUE AND OBTAINING ALL NECESSARY PERMITS.

ALL ELEVATIONS SHOWN ON THESE PLANS ARE
BASED ON THE NAVD 88. TO CONVERT THE
ELEVATION HEREON TO NGVD 29 ADD 1.51
FEET.



KNOW WHAT'S BELOW
ALWAYS CALL 811
BEFORE YOU DIG

It's fast. It's free. It's the law.

www.callsunshine.com